

CertainTeed
MAINSTREET™
Siding



CertainTeed 
Quality made certain. Satisfaction guaranteed.™

MAINSTREET™



◀ Front Cover

Siding: MainStreet Double 5" Clapboard in suede

Accents: Cedar Impressions Double 7" Perfection in sandpiper

Trim: Vinyl Carpentry™ and Restoration Millwork®

◀ Shown Here (from left to right)

MainStreet Double 4" in desert tan
MainStreet Double 4" in oxford blue
MainStreet Double 4" in silver ash

MainStreet™ siding offers consistent quality, good looks and is the ideal choice for homeowners looking for value with the benefits of a premium panel.

**FEATURE-RICH SIDING
WITH FLEXIBILITY
TO MEET ANY BUDGET**



FEATURES

7 Product Styles, 17 Colors and 2 Finishes

Triple 3"
Brushed
Clapboard in
desert tan

Double 4"
Woodgrain
Clapboard in
cypress

Double 5"
Woodgrain
Clapboard in
silver ash

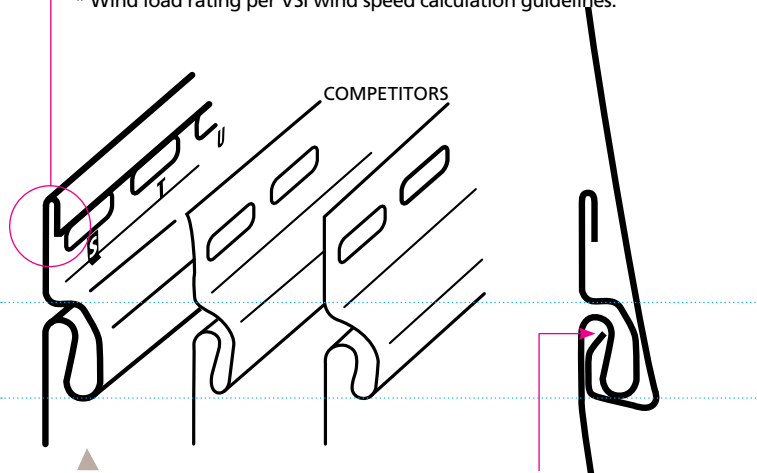
Double 4"
Woodgrain
Dutchlap in
snow



Rigidform™ Technology

RigidForm 160 (rolled-over nail hem) technology stiffens siding for a straighter-on-the-wall appearance and has been tested* to withstand wind load pressures up to 160 mph.

* Wind load rating per VSI wind speed calculation guidelines.



DuraLock™ features an oversized rigid tear-drop shape which is substantially larger than many competitors' locks, providing secure installation.

The angular locking leg creates a secure, snap-fit installation, allowing for necessary expansion and contraction.

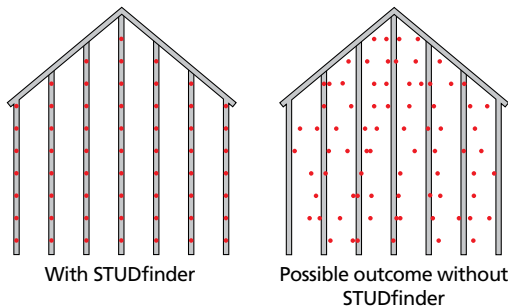
The STUDfinder™ Installation System

STUDfinder combines precisely spaced nail slots with indicator letters, designed for accurate and secure installation.



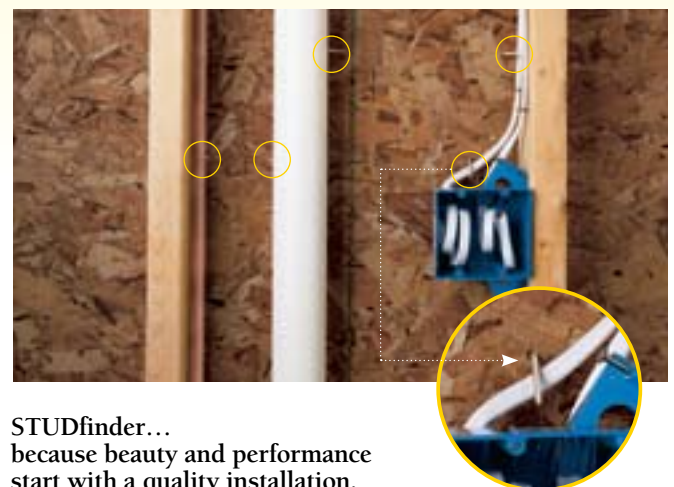
STUDfinder for Accuracy

- Nail slots align with 16" on-center standards for stud spacing.
- Indicator letters help:
 - Determine location of studs
 - Ensure nails are positioned correctly
 - Ensure correct number of nails are used

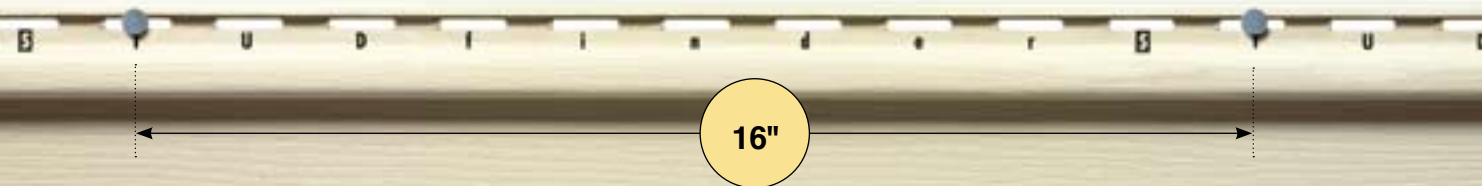


STUDfinder for Security and Performance

- Nailing to studs provides a strong and secure connection.
- Protects against blow offs from under nailing.
- Protects against buckling from over nailing.
- Helps avoid nailing into hazardous items between studs like plumbing or wiring.



STUDfinder... because beauty and performance start with a quality installation.



Double 5" Woodgrain Dutchlap in natural clay
 Single 8" Woodgrain Clapboard in colonial white
 Single 6-1/2" Brushed Beaded in oxford blue



Color performance, impact resistance and durability are assured through our exclusive PermaColor™ System, a blend of our own Certavin™ resin, superior micro-ingredients and state-of-the-art pigment chemistry.



F A S T F A C T S

| | |
|----------------------------|--|
| LOW GLOSS COLORS | Up to 17 Low-Gloss Colors with Coordinating Trim Colors Color-Clear-Through Construction |
| STYLES AND FINISHES | Double 4" Woodgrain Clapboard Triple 3" Brushed Clapboard Double 5" Woodgrain Clapboard Double 4" Woodgrain Dutchlap Double 5" Woodgrain Dutchlap Single 8" Woodgrain Clapboard Single 6-1/2" Brushed Beaded |
| THICKNESS | .042" Nominal |
| NAIL HEM AND LOCK | STUDfinder™ Installation System RigidForm™ 160 Nail Hem Technology and DuraLock™ Post-Formed Lock |
| PANEL PROJECTION | 1/2" |
| FIRE RATING | Class 1(A) |
| WARRANTY | Lifetime Limited with PermaColor™ Lifetime Fade Protection |

| | Double 4" Clapboard (woodgrain) | Triple 3" Clapboard (brushed) | Double 5" Clapboard (woodgrain) | Double 4" Dutchlap (woodgrain) | Double 5" Dutchlap (woodgrain) | Single 6-1/2" Beaded (brushed) | Single 8" Clapboard (woodgrain) |
|-----------------|---------------------------------|-------------------------------|---------------------------------|--------------------------------|--------------------------------|--------------------------------|---------------------------------|
| Colonial White | ● | ● | ● | ● | ● | ● | ● |
| Snow | ● | ● | ● | ● | ● | ● | ● |
| Sandstone Beige | ● | ● | ● | ● | ● | ● | ● |
| Heritage Cream | ● | ● | ● | ● | ● | ● | ● |
| Silver Ash | ● | ● | ● | ● | ● | ● | ● |
| Desert Tan | ● | ● | ● | ● | ● | ● | ● |
| Light Maple | ● | ● | ● | ● | ● | ● | ● |
| Sandpiper | ● | ● | ● | ● | ● | ● | ● |
| Autumn Yellow | ● | ● | ● | ● | ● | ● | ● |
| Sterling Gray | ● | ● | ● | ● | ● | ● | ● |
| Savannah Wicker | ● | ● | ● | ● | ● | ● | ● |
| Suede | ● | ● | ● | ● | ● | ● | ● |
| Natural Clay | ● | ● | ● | ● | ● | ● | ● |
| Buckskin | ● | ● | ● | ● | ● | ● | ● |
| Cypress | ● | ● | ● | ● | ● | ● | ● |
| Oxford Blue | ● | ● | ● | ● | ● | ● | ● |
| Granite Gray | ● | ● | ● | ● | ● | ● | ● |

NOTE: Colors throughout this brochure are simulated. Consult product samples before making final selection.



Finishing Touches Start with Decorative Trim

Two great choices for one authentic, real wood look.

Vinyl Carpentry™

Vinyl Carpentry™ trim offers you a wide array of decorative design possibilities to accent your home's exterior. Replicate the look of real wood with a wonderful assortment of styles and colors – and they never need painting.

Soffits & Gables



Beaded Triple 2" Panel with Soffit Cove Molding



Cornice Molding with Cedar Impressions Half-Round accents and Vinyl Carpentry Triple 2" Beaded Soffit

Window & Door Trim



5" Lineal with Crown Molding



3-1/2" Lineal with Crown Molding, Corner Block and Rosette

Corners



Traditional SuperCorner™



Beaded SuperCorner™

Restoration Millwork®

Restoration Millwork® cellular PVC trim makes an authentic statement on your home. Available in smooth and realistic woodgrain TrueTexture™ finish in a wide variety of traditional and specialty profiles – you can also mill it or paint it to create custom designs.



Trimboards, Sheets, Corners, Beadboard, Brickmould, Drip Cap and more...



Window & Door Casings, Panels, Detailed Millwork and Special J-Pocket Accessories for Vinyl Siding



Column Enclosures, Soffit, Fascia or Custom Milled Designs

buildingresponsibly™

ASK ABOUT OUR OTHER CERTAINTEED PRODUCTS AND SYSTEMS:

EXTERIOR: ROOFING • SIDING • WINDOWS • FENCE • RAILING • TRIM • DECKING • FOUNDATIONS • PIPE
INTERIOR: INSULATION • GYPSUM • CEILINGS

CertainTeed Corporation
 P.O. Box 860
 Valley Forge, PA 19482

Professional: 800-233-8990
 Consumer: 800-782-8777
www.certainteed.com

CertainTeed